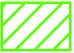
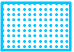


**Bristol Channel Approaches /  
Dynesfeydd Môr Hafren**

Tudalen  
Page **1 / 3**

Cod Safle y GE  
EC Site Code

-  Ardal Cadwraeth Arbennig dan ystyriaeth (ACAy)  
**Possible Special Area of Conservation (pSAC)**
-  Ardaloedd Cadwraeth Arbennig Eraill (ACA)  
**Other Special Areas of Conservation (SAC)**

Arwynebedd cyfan  
**Total area 585,129.07 ha**

Hydred  
**Longitude -4.9083 dec deg**

Lledred  
**Latitude 51.0286 dec deg**

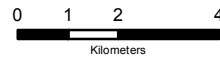


N.G. Mae'r ffigurau Lledred/Hydred i gyd wedi deillio o System Geodesig y Byd 84 (WGS 84)  
**N.B. All Latitude/Longitude figures have been derived from World Geodetic System 84 (WGS 84).**

Tafluniad map: Y Grid Cenedlaethol Prydeinig  
**Projection: British National Grid**

Rhif diweddaraf  
**Version number 1 12/01/2016**

Graddfa / **Scale 1:150,000**



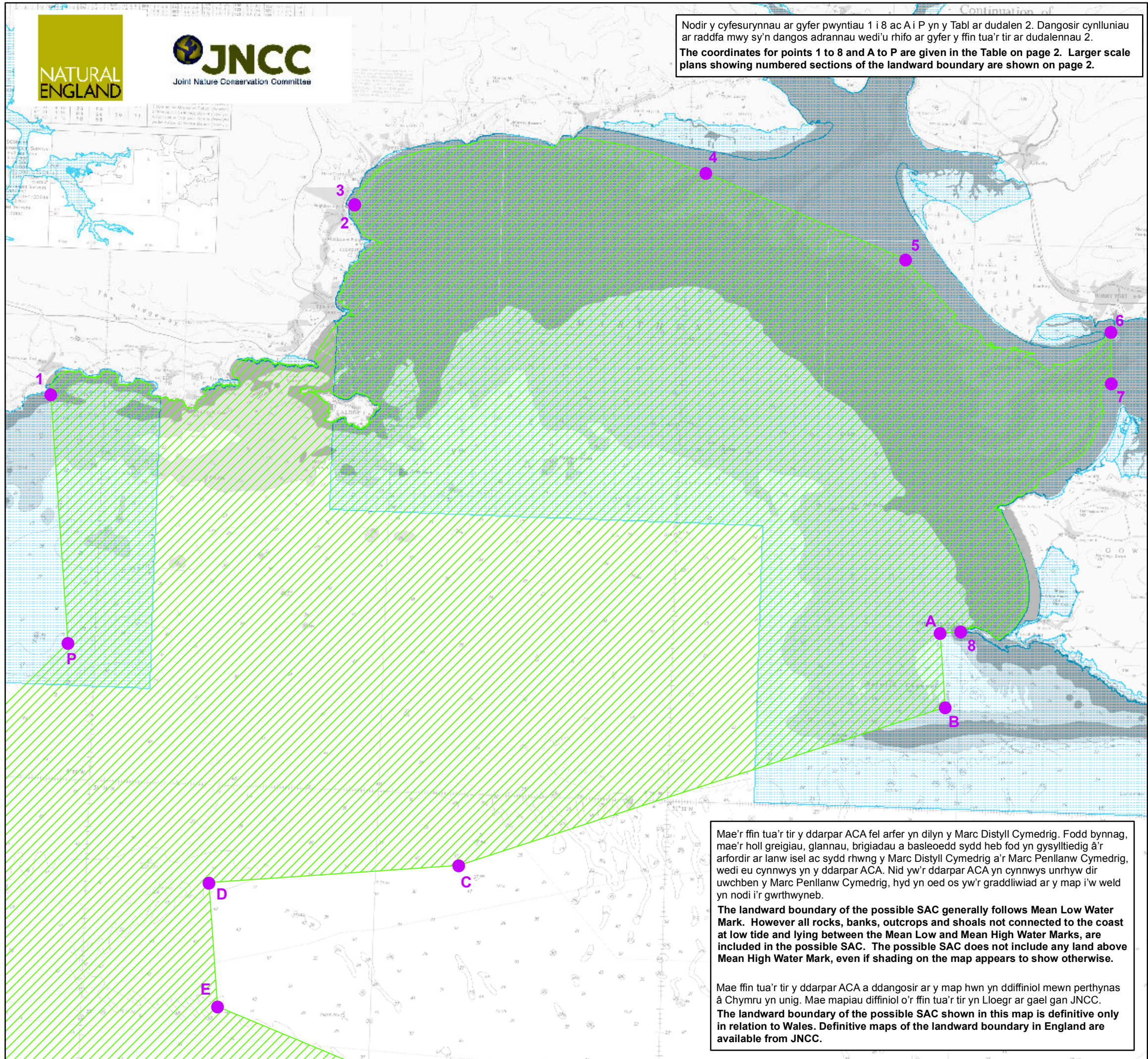
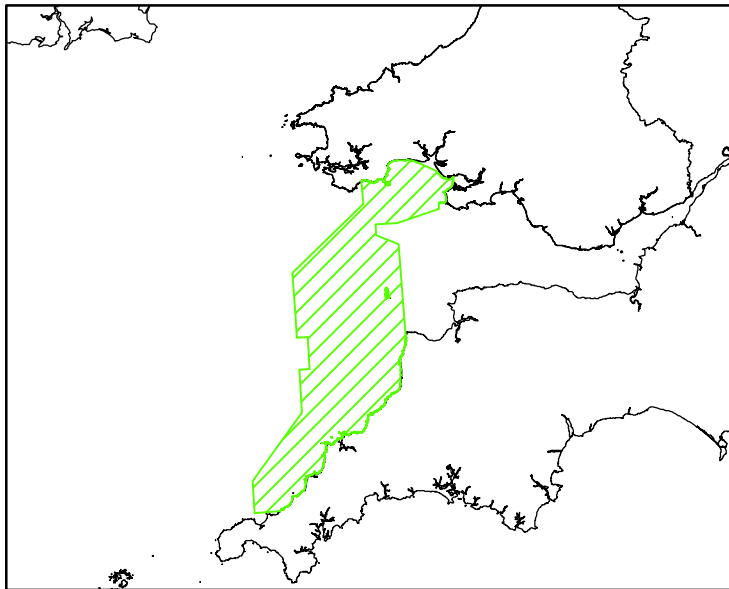
Noder: Data wedi ei gipio ar raddfa 1:2,500, rhoddwyd ar raddfa 1:150,000.  
Mae mapiau graddfa-fawr swyddodol ar gael gan CNC.  
Mae graddfa'r map yn cywir pan argraffu yn A3.  
**Note: Data captured at 1:2500 scale, placed on 1:150,000 scale.  
A definitive large scale map is available on request from NRW.  
The scale of this map is only correct when printed out at A3.**

Noder: Gall y ffin newid lle mae'n dilyn llinell Marc Penllanw Cymedrig ac/neu llinell Marc Distyll Cymedrig.  
**Note: Where the boundary follows the lines of Mean High and/or Mean Low Water Marks it is subject to change.**

© Hawlfraint y goron a hawliau cronfa ddata. 2015. Arolwg Ordnans. 100019741  
© Crown Copyright and database rights. 2015. Ordnance Survey. 100019741

© British Crown and OceanWise Ltd, 2015. Cedwir pob hawl. Rhif Trwydded. EK001-20120402.  
© British Crown and OceanWise Ltd, 2015. All rights reserved. License No. EK001-20120402.

RHAID PEIDIO Â DEFNYDDIO HWN AR GYFER LLYWIO NOT TO BE USED FOR NAVIGATION



Nodir y cyfesurynnau ar gyfer pwyntiau 1 i 8 ac A i P yn y Tabl ar dudalen 2. Dangosir cynlluniau ar raddfa mwy sy'n dangos adrannau wedi'u rhifo ar gyfer y ffin tua'r tir ar dudalennau 2.  
**The coordinates for points 1 to 8 and A to P are given in the Table on page 2. Larger scale plans showing numbered sections of the landward boundary are shown on page 2.**

Mae'r ffin tua'r tir y ddarpar ACA fel arfer yn dilyn y Marc Distyll Cymedrig. Fodd bynnag, mae'r holl greigiau, glannau, brigadau a basleoedd sydd heb fod yn gysylltiedig â'r arfordir ar lanw isel ac sydd rhwng y Marc Distyll Cymedrig a'r Marc Penllanw Cymedrig, wedi eu cynnwys yn y ddarpar ACA. Nid yw'r ddarpar ACA yn cynnwys unrhyw dir uwchben y Marc Penllanw Cymedrig, hyd yn oed os yw'r graddliwiad ar y map i'w weld yn nodi i'r gwrthwyneb.  
**The landward boundary of the possible SAC generally follows Mean Low Water Mark. However all rocks, banks, outcrops and shoals not connected to the coast at low tide and lying between the Mean Low and Mean High Water Marks, are included in the possible SAC. The possible SAC does not include any land above Mean High Water Mark, even if shading on the map appears to show otherwise.**


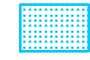
Mae ffin tua'r tir y ddarpar ACA a ddangosir ar y map hwn yn ddiffinïol mewn perthynas â Chymru yn unig. Mae mapiau diffinïol o'r ffin tua'r tir yn Lloegr ar gael gan JNCC.  
**The landward boundary of the possible SAC shown in this map is definitive only in relation to Wales. Definitive maps of the landward boundary in England are available from JNCC.**



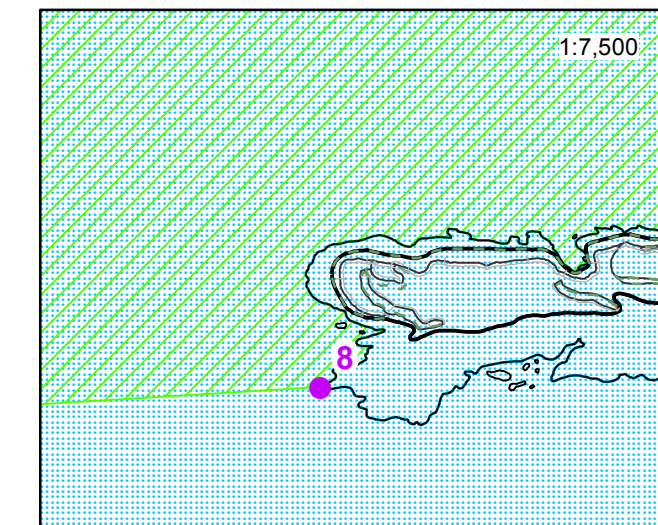
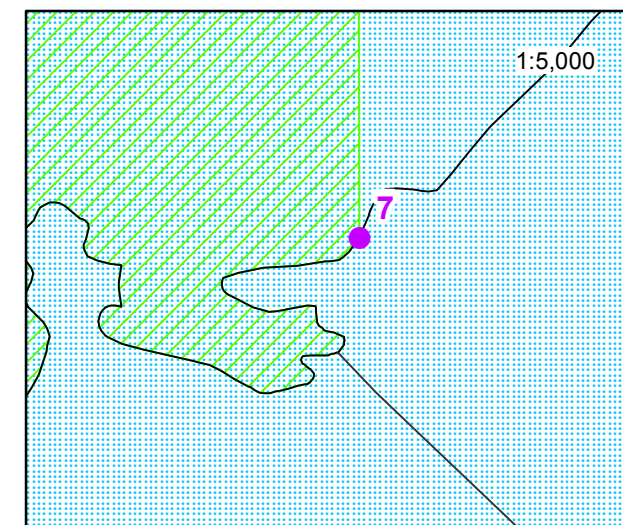
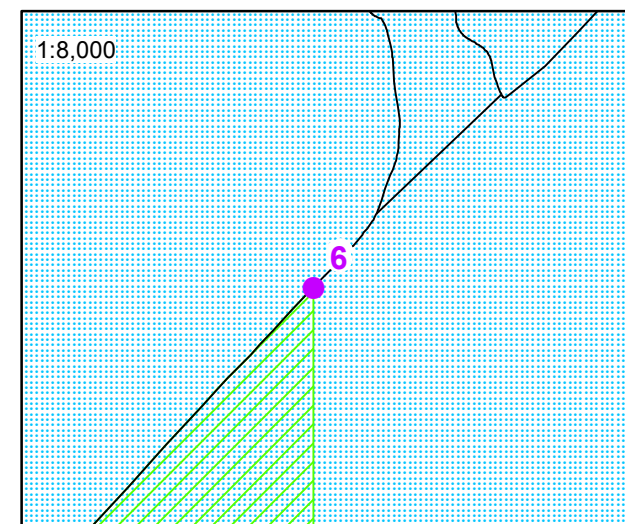
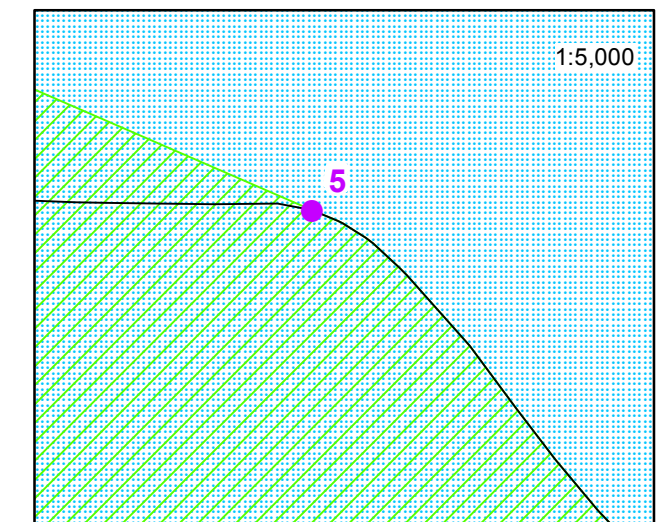
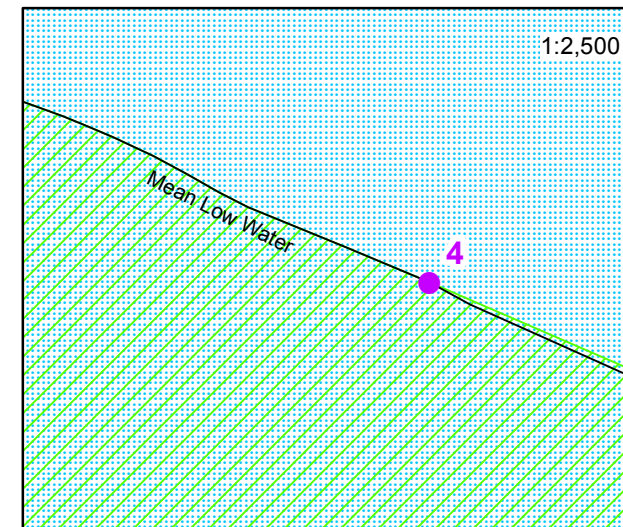
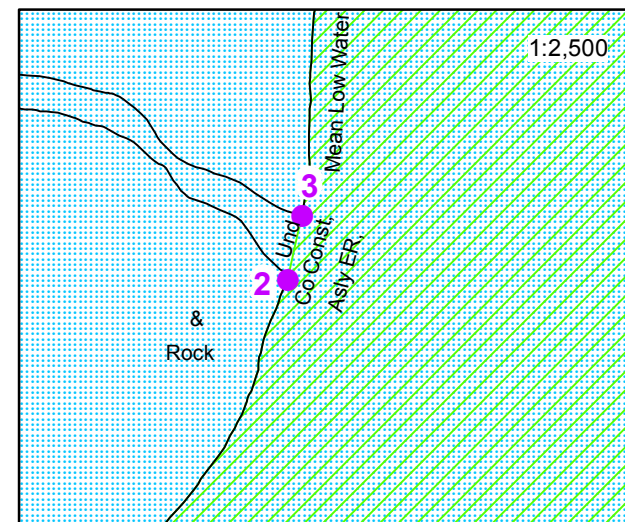
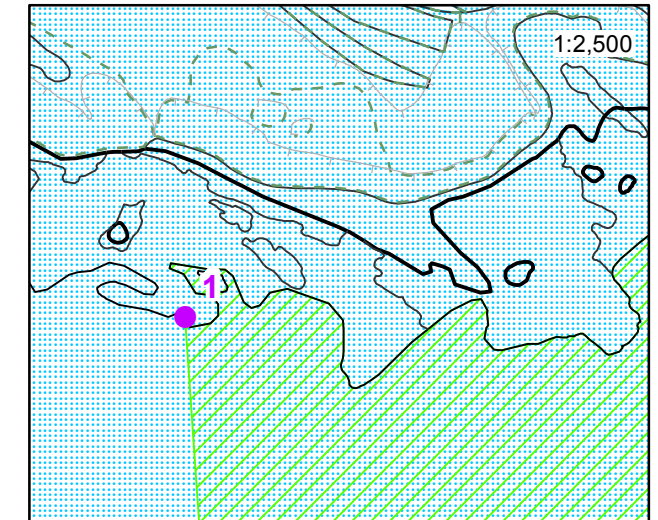
# Bristol Channel Approaches / Dynesfeydd Môr Hafren

Ardal Cadwraeth Arbennig dan ystyriaeth (AGAy)  
possible Special Area of Conservation (pSAC)

Pwynt	Hydred	Lledred	X	Y
Point	Longitude	Latitude	X	Y
1	-4.8634	51.6375	201,879.43	197,121.53
2	-4.6916	51.7100	214,059.00	204,730.20
3	-4.6916	51.7102	214,063.70	204,751.20
4	-4.4888	51.7259	228,130.50	206,000.00
5	-4.3714	51.6971	236,132.50	202,528.50
6	-4.2509	51.6734	244,374.70	199,628.70
7	-4.2500	51.6548	244,377.50	197,561.50
8	-4.3326	51.5637	238,342.01	187,609.61
A	-4.3445	51.5630	237,515.06	187,558.20
B	-4.3401	51.5364	237,719.17	184,587.37
C	-4.6178	51.4735	218,220.00	178,252.07
D	-4.7612	51.4640	208,219.09	177,565.95
E	-4.7536	51.4195	208,560.18	172,593.01
F	-4.6037	51.3843	218,847.36	168,301.60
G	-5.3127	50.2542	163,889.45	44,681.85
H	-5.4733	50.2426	152,385.54	43,905.32
I	-5.4972	50.3760	151,378.00	58,816.11
J	-5.1957	50.6682	174,210.93	90,325.02
K	-5.2270	50.8462	172,859.22	110,210.24
L	-5.1567	50.8512	177,830.62	110,548.60
M	-5.1803	50.9847	176,814.56	125,463.11
N	-5.2508	50.9797	171,843.18	125,124.11
O	-5.2988	51.2467	169,805.30	154,951.70
P	-4.8479	51.5483	202,563.49	187,170.19

-  Ardal Cadwraeth Arbennig dan ystyriaeth (AGAy)  
possible Special Area of Conservation (pSAC)
-  Ardaloedd Cadwraeth Arbennig Eraill (ACA)  
Other Special Areas of Conservation (SAC)

Dangosir y pwyntiau wedi'u rhifo yn y mapiau mewnol canlynol ar y prif fap ar dudalen 1.  
The numbered points in the following inset maps are shown on the main map on page 1.



Ac eithrio pan nodir yn wahanol, mae ffin yr ACA bosibl yn dilyn y Marc Distyll Cymedrig rhwng y pwyntiau canlynol:



- 1 a 2
- 3 a 4
- 5 a 6
- 7 a 8

Except where otherwise shown, the boundary of the possible SAC follows Mean Low Water Mark between the following points:

- 1 and 2
- 3 and 4
- 5 and 6
- 7 and 8

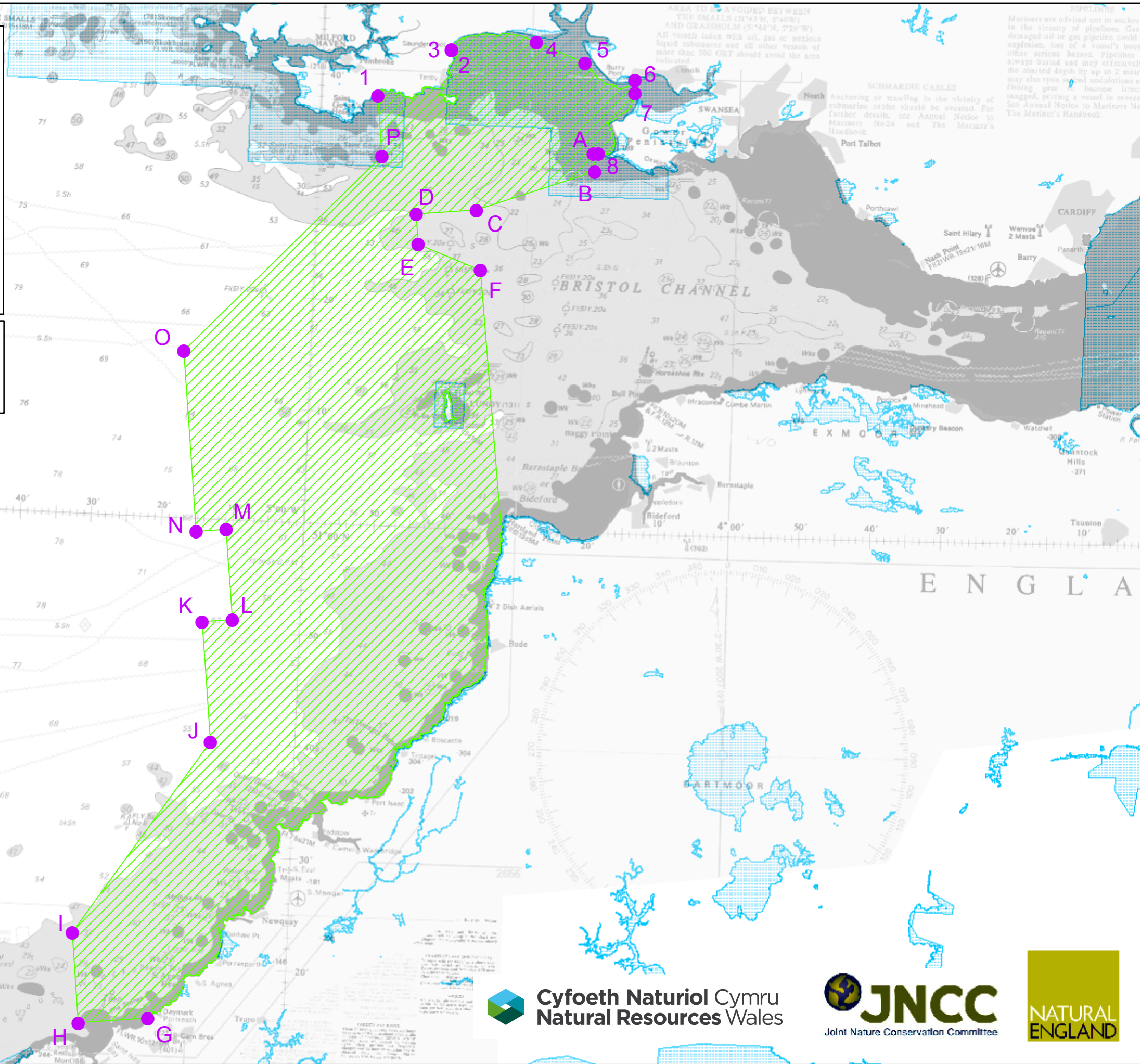
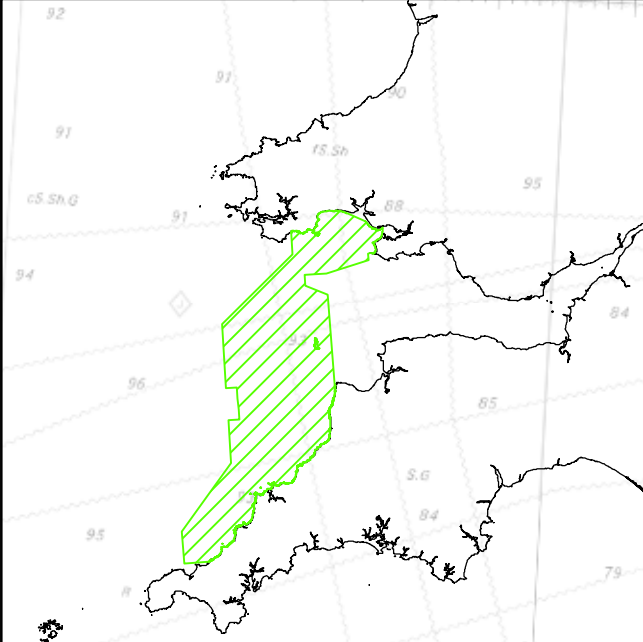
# Bristol Channel Approaches / Dynesfeydd Môr Hafren

Tudalen  
Page 3 / 3

-  Ardal Cadwraeth Arbennig dan ystyriaeth (ACAy)  
**Possible Special Area of Conservation (pSAC)**
-  Ardaloedd Cadwraeth Arbennig Eraill (ACA)  
**Other Special Areas of Conservation (SAC)**

Nodir y cyfesurynnau ar gyfer pwyntiau 1 i 8 ac A i P yn y Tabl ar dudalen 2.  
Dangosir cynlluniau raddfa mwy sy'n dangos adrannau wedi'u rhifo ar gyfer y ffin tua'r tir ar dudalennau 2.  
The coordinates for points 1 to 8 and A to P are given in the Table on page 2.  
Larger scale plans showing numbered sections of the landward boundary are shown on page 2.

© Hawlfraint y Goron a hawliau cronfa ddata, 2015. Arolwg Ordnans, 100019741  
© Crown Copyright and database rights, 2015. Ordnance Survey, 100019741  
© British Crown and OceanWise Ltd, 2015. Cedwir pob hawl. Rhif Trwydded, EK001-20120402.  
© British Crown and OceanWise Ltd, 2015. All rights reserved. License No. EK001-20120402.  
RHAID PEIDIO Â DEFYDDIO HWN AR GYFER LLYWIO NOT TO BE USED FOR NAVIGATION



AREA TO BE AVOIDED BETWEEN THE SMALLS (51°43'N, 5°40'W) AND GRASHOLM (51°44'N, 5°29'W) All vessels laden with oil, gas or noxious liquid substances and all other vessels of more than 500 GRT should avoid the area indicated.

SUBMARINE CABLES Anchoring or trawling in the vicinity of submarine cables should be avoided. For further details, see Annual Notice to Mariners No 24 and The Mariner's Handbook.

PIPPILINES Pipelines are advised not to anchor in the vicinity of pipelines. Gas damaged oil or gas pipelines could explode, loss of a vessel's bow or other serious hazard. Pipelines always buried and may effectively be obscured depth by up to 2 metres. Any other vessels should be aware of fishing gear because incorrect snagging, putting a vessel in severe danger. See Annual Notice to Mariners No 24 and The Mariner's Handbook.

0 2 4 8 12 Miles

Graddfa /Scale 1:650,000

Mae graddfa'r map yn cywir pan argraffu yn A3  
The scale of this map is only correct when printed out at A3

**Cyfoeth Naturiol Cymru**  
**Natural Resources Wales**

**JNCC**  
Joint Nature Conservation Committee

**NATURAL ENGLAND**

Date: 12/01/2016  
Coordinate System: WGS 1984. World Mercator